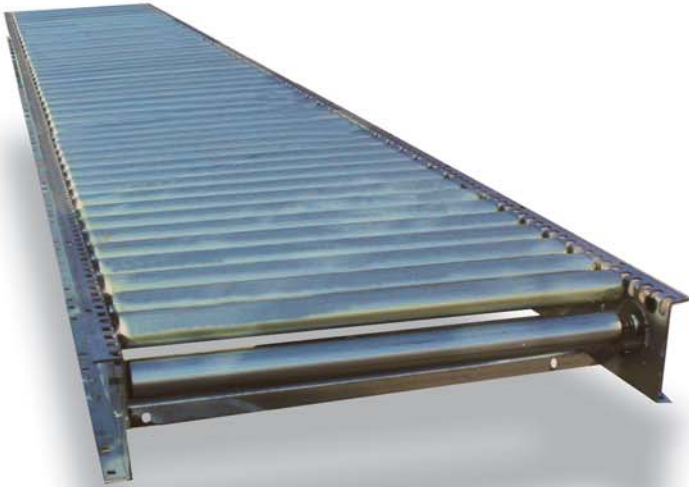




Adjustable Pressure Live Roller Conveyor (AP)



MECHANICAL CHARACTERISTICS

Bed Section:

6" Deep x 1 3/8" Flange x 10 Gauge frame in 12" increments between 12" and 144".

Galvanized Rollers:

Carrying: 1 7/8" Diameter, 16 Gauge, with 7/16" hex axle.

Pressure: 1 7/8" Diameter, 16 Gauge, with 5/16" hex axle.

Drives:

6", 8", or 10" Center Drives and 6" or 8" End Drives.

Lagged pulley with automatic spring take-up on center drive. 8" wide Type 6 Friction x Friction belting.

3/4 HP to 5 HP 230V-460V/3-Phase/60Hz. "C" face TEFC motor with reducer. Speed range is 60-320 FPM.

Terminal End:

4" or 6" Diameter plain pulley.

Axle Isolators:

Specially designed conductive plastic insert isolates carrying roller axles from the conveyor frame to reduce noise and prevent wear.

FEATURES

Automation's quiet running, versatile and economical live roller conveyor components are important elements of conveyor systems that require side loading and smooth integration of a countless number of processed materials from small to large sizes in weights up to 100 pounds per foot.

Automation's Adjustable Pressure Live Roller Conveyors are motor driven with adjustability built-in to adapt to minimum pressure accumulation smoothly and quietly. The pressure roller assemblies utilized on the Adjustable Pressure Live Roller Conveyor are equipped with an adjustable cam. The height of the pressure roller is adjusted by rotating the cam. The cam is stepped so that as it rotates the pressure roller moves upward or downward.

Automation's pre-engineered belt driven live roller conveyor components are economical, versatile, flexible, durable, and are easy to install. They feature galvanized rollers, point-by-point cam adjustable pressure rollers, specially designed and easy to replace belts, and are easy to maintain for long life.

SPECIFICATIONS

Typical Applications:

Transportation
Minimum Pressure Accumulation
Picking Conveyor

Live Load Capacity:

Up to 100 lbs/ft. depending on width, roller centers, supports, etc.

Nominal Widths:

18", 24", 30" & 36"

Between Rail Widths:

15 1/2", 21 1/2", 27 1/2" & 33 1/2"

Carrying Roller Centers:

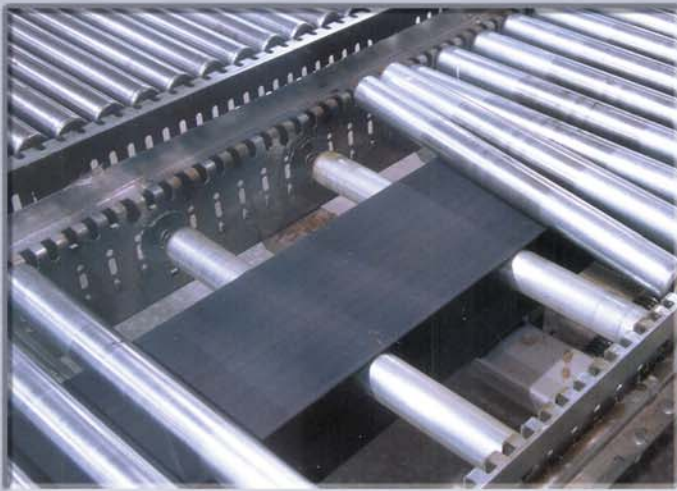
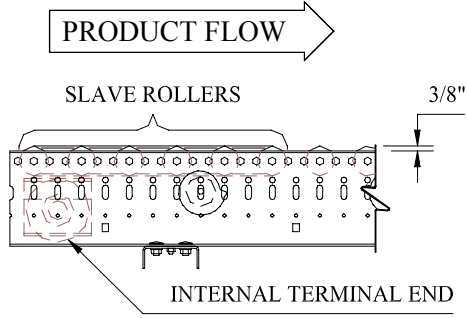
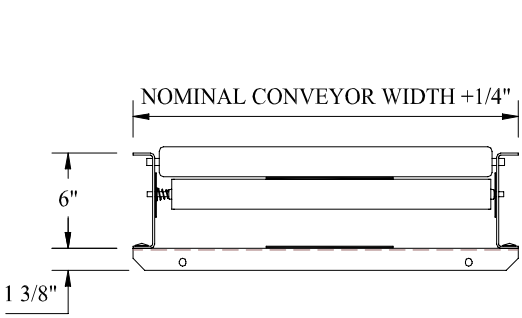
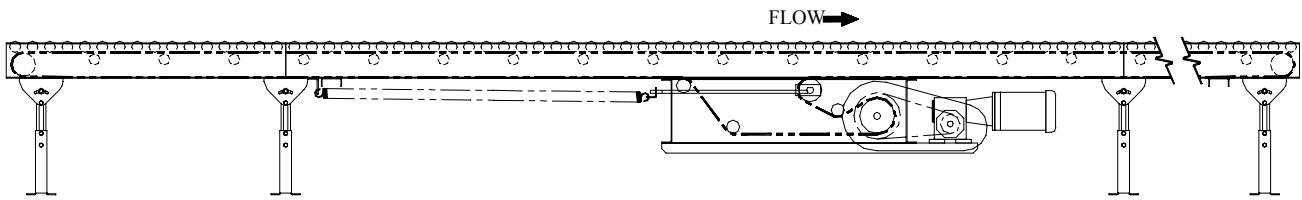
2", 3" & 4"

Pressure Roller Centers:

9"

Options:

Take-Ups, Guard Rails, and & Supports
High Speed Rollers (std. over 180 FPM)
Cog Belt Drive
Power Take-Off Units
Pop-Out Carrying Rollers
Coated Rollers (*at air brakes*)
Drop Kit
Terminal End Covers
Pop-Out Roller at Terminal End
Automatic & Manual Case Stops
Powder Coat or Galvanized Finish



11000 South Laverne Avenue Oak Lawn, Illinois 60453-5500
Phone: 708-229-3700 Fax: 708-229-3799
www.automotionconveyors.com
info@automotionconveyors.com