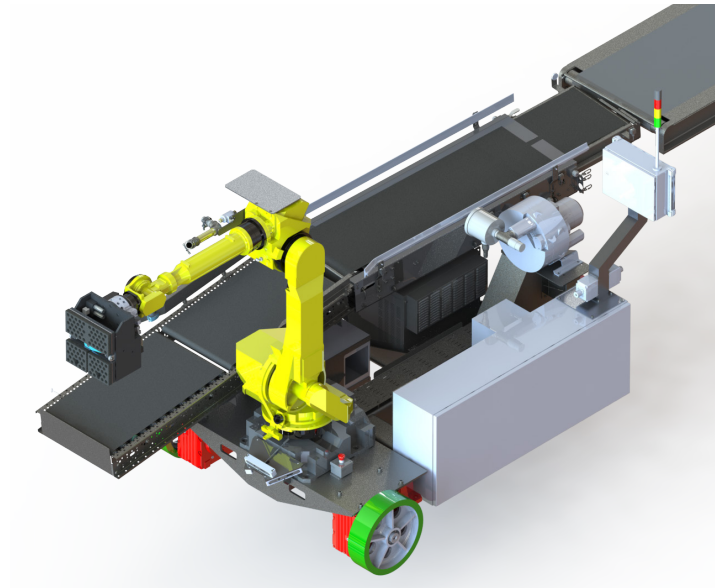


Robotic Container Unloader (RTU) - Standard

RTU - Standard is a self-guided, autonomous robotic truck and shipping container unloader.

The RTU utilizes advanced perception technology that allows it to sense and acquire product that has been floor loaded within semi-truck trailers or ocean freight container. Wynright's truck unloading technology is ideal for rectangular boxes, bales, and even tires. The system has the capability to unload product automatically, adjusting its position by sensing the sidewalls, floor and product as it unloads and moves forward to completely unload the container.

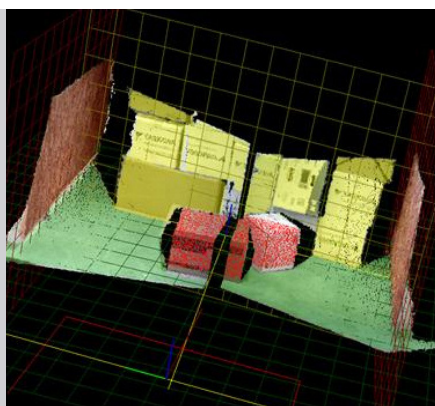
The robots perception algorithms and end of arm tooling has been optimized to pick multiple cases per cycle to meet the demands of customers that receive contiguous or single sku containers. The flexible design of the RTU allows for a wide variety of downstream processing options, including robotic palletizing, manual palletizing, and receiving sorters.



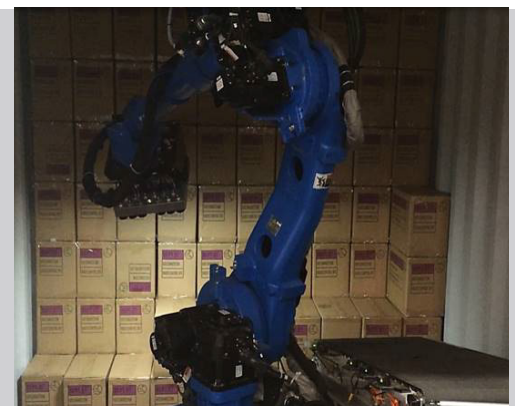
Optional equipment can be provided to service multiple doors, track weights and size of cases, print labels, and scan barcodes. Each system can be customized to individual customer needs.



Designed to handle containers with corrugated and smooth sides






Advanced perception technology acquiring position information

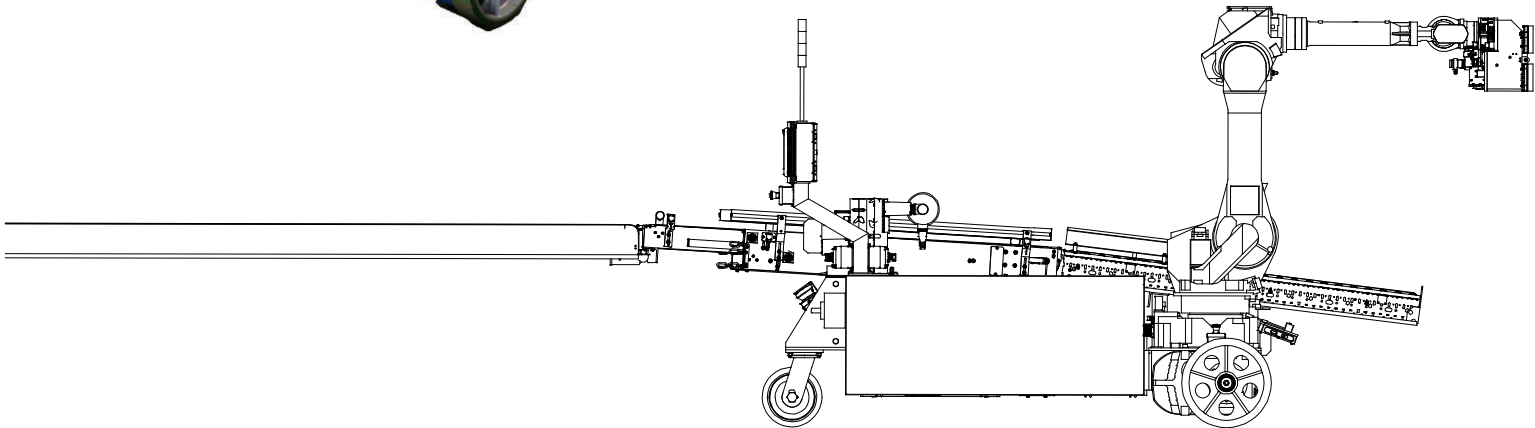


RTU unloading an ocean container

RTU - Standard



			
Size Range	Small 6in-11in (150mm-280mm)	Medium 11in-20in (280mm-500mm)	Large 18in-30in (450mm-750mm)
Rate	500 - 1200 cph	500 - 900 cph	350 - 550 cph



Specifications *

Machine Dimensions

- Length: 120" (3m)
- Width: 68" (1.7m)
- Height: 45" (1m)

Manipulator Specifications

- Robot Model: Yaskawa or Fanuc
- Reach: 80.7" (2.050m)
(depends on robot model)

Product Specifications

- Product Weight: 220lb
(100kg)

Machine Controller

- PLC Controlled (Allen Bradley)
- LCD Touch Screen Display
- Operator friendly interface

Power Requirements

- 460-480 VAC, 3PH, 20AMP
- 80 psi @ 3.0 CFM
(5.5 bar @ .08cmm)

Options

- Multiple door transverse
- Bar Code Reader
- Case Tracking Software
- WMS / WCS Interface

* Specifications may vary with applications